

Secure & reliable data erasure software

Delete does not always mean deleted.

Whether driven by new regulations or by corporate social responsibilities, companies are changing the way they dispose of their data. Whatever your situation, you need to ensure that these positive actions do not come at the cost of the safety of your proprietary information. All data that is company sensitive should be erased from hardware before it is disposed of to ensure maximum data protection.

The "Delete" button or other basic overwriting techniques only delete the pathways to the data rather than the data itself and confidential information will still be at risk. Ontrack® Eraser erases all traces of information stored on the media making recovery of data impossible.

Ontrack Eraser is the most flexible data erasure solution on the market. It makes data erasure flexible, fast, secure and cost-efficient. Ontrack Eraser can be run from Windows® and Linux® environments and can be run over networks or on individual PCs.



Flexibility through a fully customisable interface

With Ontrack Eraser you are in control. You can customise the way you interact with the product in any way you see fit. Configure it to automatically erase batches of drives or set up several layers of security levels before you erase a single drive. You can change the configuration at any time.

Fast & simple

Install Ontrack Eraser through a simple and intuitive administration tool. The configuration only takes minutes before you can start erasing data. What's more you can erase several units at the same time.

A central server handles licensing and erasure reporting. The licences reside in a Server USB Key, which

may be re-filled via email. The most common scenario is to connect the hard drive you wish to erase to a network. Authentication requests will automatically be sent over the network to the server client. Once the process is complete, a report will be sent back to the server client.

If the PC to be erased cannot be connected to the network, simply use a Mobile USB Key to connect the PC.



CESG Infosec 5
Lower and Higher
Certified.

Secure erasure

Ontrack Eraser helps guarantee that all data has been erased. Most applications only erase the index, Ontrack Eraser overwrites all traces of information, thus making data reconstruction impossible. Users can decide which standard they wish to use. Among others, Ontrack Eraser includes standards approved by the UK and US Military authorities, and has full CESG approval to Infosec 5.

Extensive reporting

Track and monitor the lifecycle of the data contained on your hardware. Ontrack Eraser's powerful reporting tool collects all erasures made over the network or from individual hard drives. Receive a clear XML format report with detailed information about erasure status and process. Email rules can also be established to provide notification on the success of an erasure process.

Included with Ontrack Eraser 3.1

- Linux® Client
- Windows® Client
- Erasure Server
- USB Dongle Key
- Administration Tool
- Configuration Tool
- Report Generator

System requirements

Ontrack Eraser Client (Windows)

- Windows® XP, Windows Vista, Windows Server® 2003, Windows 2008
- IBM®-compatible PC with a Intel® Pentium® or greater processor
- VGA 800 x 600 or higher screen resolution
- RAM: 128MB
- 20MB of free hard disk space

Ontrack Eraser Client (Linux)

- IBM-compatible PC with a Pentium or greater processor
- VGA 800 x 600 or greater graphics capability (VESA compatibility)
- RAM: CD/DVD boot 128MB, USB, PXE and RIS (WDS) Boot 128MB

Ontrack Eraser Network Suite

- Windows XP, Windows Vista, Windows 2003, Windows 2008
- IBM-compatible PC with a Pentium or greater processor
- VGA 800 x 600 or higher screen resolution
- RAM: 128MB
- 200MB of free hard disk space

Windows Servers

To run Ontrack Eraser software on a system that uses Windows, the following ports must be configured:

- Ontrack Eraser Server Administration port: 4150
- Ontrack Eraser erase clients ports:
 - 4151 XMLRPC (request erasures, upload reports, etc.)
 - 4152 UPD (progress update)

For more Ontrack Eraser information, please contact a member of our team.

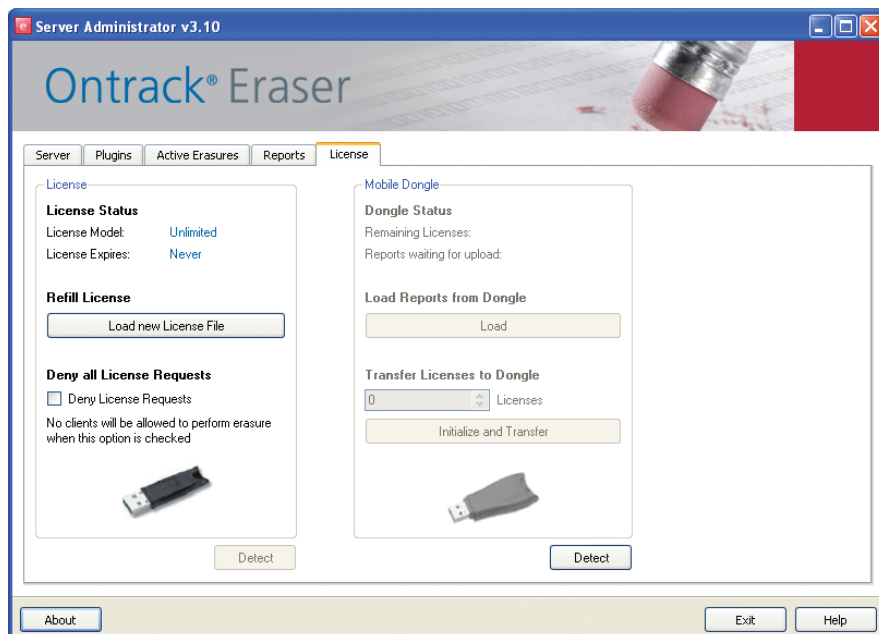
UK: +44 (0)1372 736 632
IE: 1800 930 183

www.ontrackeraser.co.uk

Copyright © 2010 Kroll Ontrack Inc.
All Rights Reserved.

Kroll Ontrack, Ontrack and other Kroll Ontrack brand and product names referred to herein are trademarks or registered trademarks of Kroll Ontrack Inc., and/or its parent company, Kroll Inc., in the United States and/or other countries.

All other brands and product names are trademarks or registered trademarks of their respective owners.



Intuitive and simple to use interface.